

# ROSSI MACHINE TOOLS



AHEAD IN MACHINERY



OFFICE - 011 618 3277

FAX - 086 503 4436

ALEX - 083 500 0036

ELVIN - 073 662 2290

EMAIL - [rossimachines@worldonline.co.za](mailto:rossimachines@worldonline.co.za)

18 MARGARET MCINGANA STR.

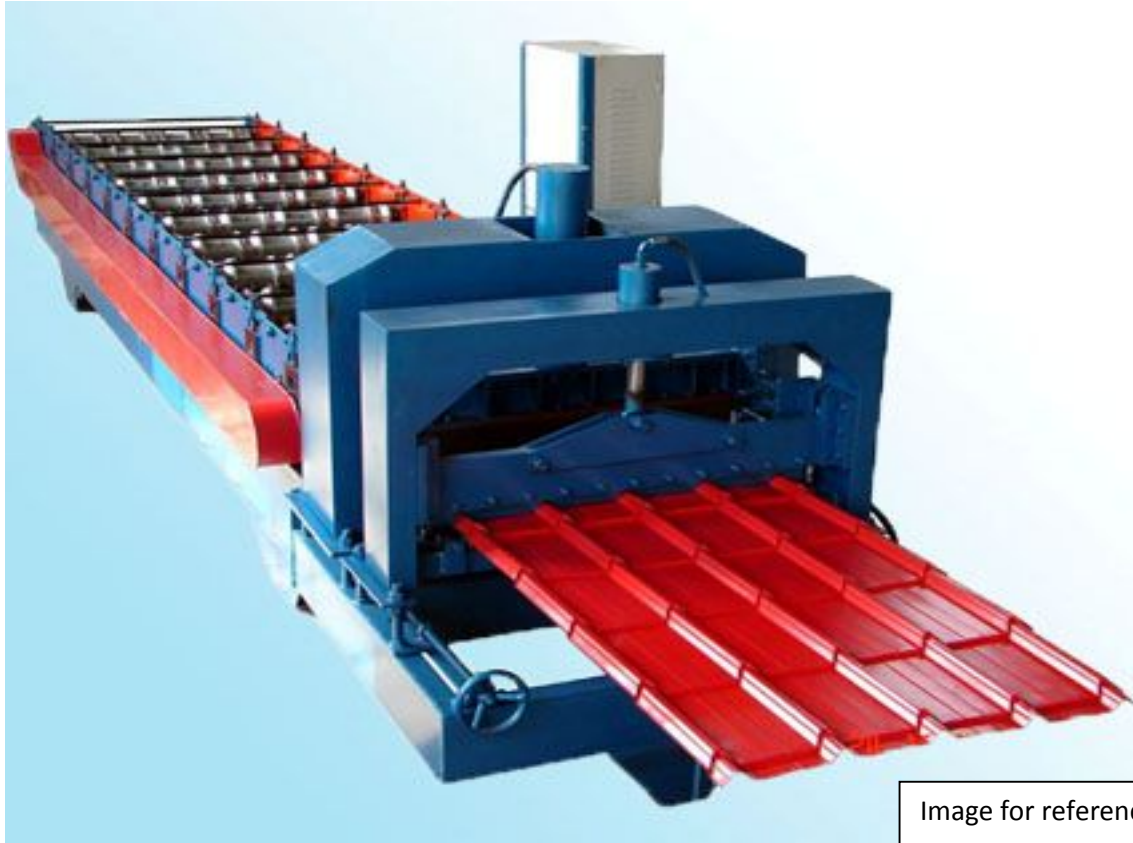
(PREVIOUSLY WOLHUTER STR.)

JOHANNESBURG

26°12' 34" S 28°03'47" E

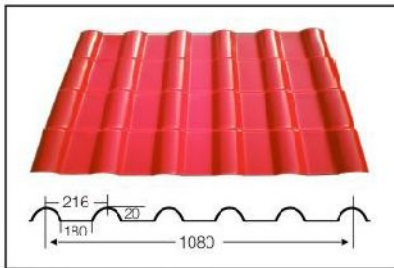
WEBSITE - [www.rossimachines.co.za](http://www.rossimachines.co.za)

# GALVANISE ROOF TILE ROLL FORMING MACHINE

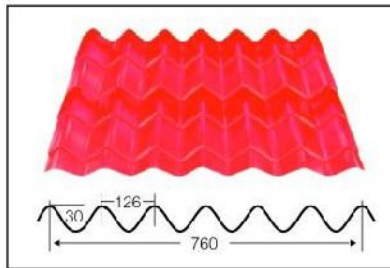


## 1. PROFILE

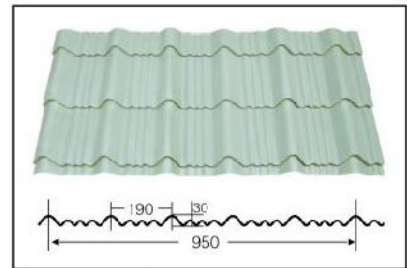
### Some of the many profiles available



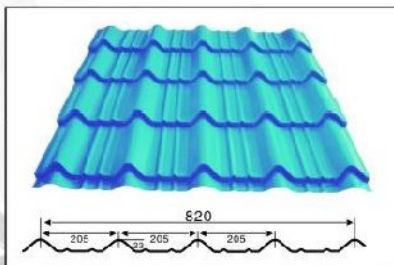
Size: 20-180-1080



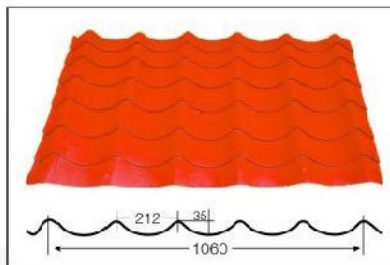
Size: 30-126-760



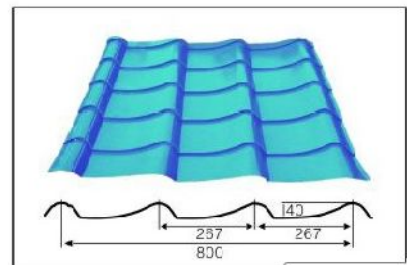
Size: 30-190-950



Size: 23-205-820

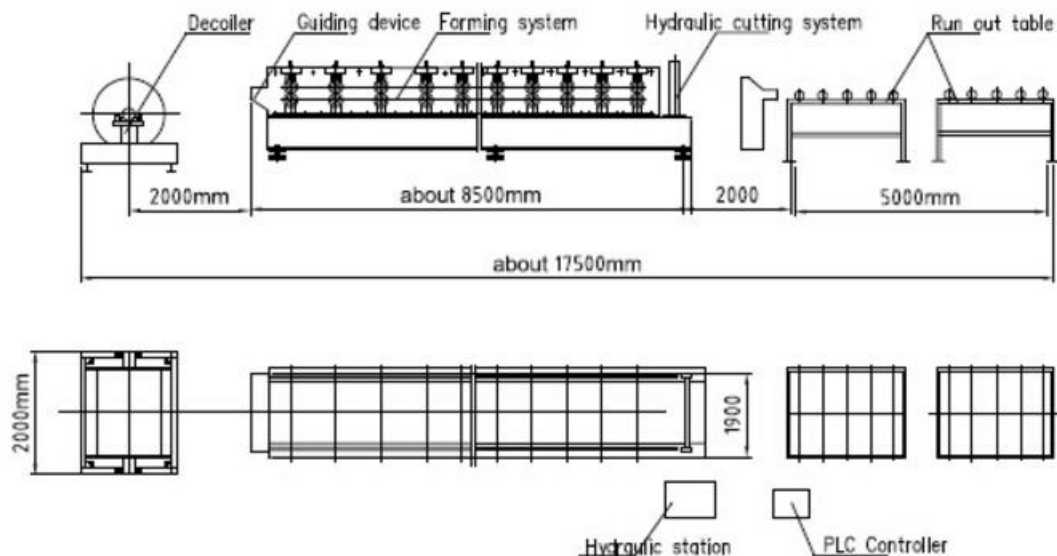


Size: 35-212-1060



Size: 40-267-800

## 2. PROCESS FLOW



## 3. TECHNICAL SPECIFICATIONS

### 3.1 MAIN PAREMETERS OF ROLL FORMING MACHINE

A. SUITABLE MATERIAL: Color Galvanized steel coil
B. THICKNESS OF STEEL: 0.3 - 0.8mm
C. INPUT WITDH OF STEEL: Dependant on profile
D. OUTPUT WITDH OF STEEL: Dependent on profile
E. PRODUCTION SPEED: 8 - 12m/min
F. ROLLERS / STATIONS: 14
G. ROLLER MATERIAL: 45# Steel. Forged and hardened to 58 Rockwell
H. SHAFT DIAMETER: 75mm
I. SHAFT MATERIAL: 45# Quenched and Tempered
J. MAIN STRUCTURE OF MACHINE: 300mm H steel
K. WALL THICKNESS OF MACHINE: 14mm steel plate
L. TRANSMISSION CHAIN: 1.0"
M. REDUCER: works stably with no noise
N. MAIN MOTOR POWER: 5.5Kw
O. VOLTAGE: 380V 3-Phase

### 3.2 CUTTING DEVICE

A. HYDRAULIC or MECHANICAL

B. BLADE: Cr12 steel, Quenched to 58 Rockwell

### 3.3 CONTROL SYSTEM

A. PLC: Delta from Taiwan

B. TOUCH SCREEN: Delta

C. PROGRAMMABLE FOR LENGTH AND QUANTITY - UP TO 20 PROGRAMS

D. AUTOMATIC LENGTH MEASUREMENT

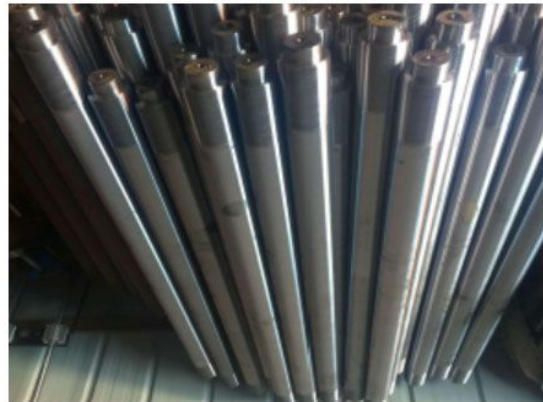
E. AUTOMATIC QUANTITY MEASUREMENT

### 4. PICTURE LIBRARY

#### ROLLERS



#### SHAFTS



#### PLC SYSTEM



#### ROTARY ENCODERS



**4. PICTURE LIBRARY Cont.**

**LIMIT SWITCHES**



**BEARING**



**MAIN MOTOR**



**HYDRAULIC PUMP STATION**



**MECHANICAL SHEAR STATION  
(optional)**



**MANUAL DECOILER**



**OUTPUT TABLE**



**MACHINE COVER (optional)**



<b>FREE ATTACHEMENT PARTS INCLUDE:</b>	
Chain	X1 pcs
Bearings	X1 pcs
Process switch	X1 pcs

**PLEASE NOTE:**

1. Machine can be modified as per customer request - optional
2. Hydraulic or mechanical cutting system
3. Machine is self-adjusting for different material thickness
4. Standard de-coiler of 5Ton. Bigger de-coiler and breaking system optional

**INSTALLATION**

If assistance with installation is needed, the seller will sent technicians to the buyers' premises to assist.

Within the province of Gauteng, this service is free.

If outside of the province of Gauteng, the buyer will be responsible for the cost of transport and accommodation for the technicians.

If assistance with installation is needed, the buyer shall make the following preparations before the arrival of the technicians:

1. Position the machine in the buyers' factory.
2. Ensure that electrical wiring has been connected correctly.
3. Prepare material for trial run.
4. Provide labor for assistance .